



SUNRISE

*Sustainable Urban Neighbourhoods
Research and Implementation
Support in Europe*

SUNRISE - Co-creating sustainable mobility solutions

MORE Exchange Forum,
24.6.2020

Lukas Franta, Centre of Sociology, Institute of Spatial Planning, TU Wien (Vienna)
Nadine Haufe, Centre of Sociology, Institute of Spatial Planning, TU Wien (Vienna)



This project has received funding from the European Union's Horizon 2020 research and innovation programme under grant agreement No 635998

Version: 1
Date: 18.6.2020
Author: Lukas Franta

SUNRISE - An Introduction

The Mission

SUNRISE = Sustainable Urban Neighbourhoods - Research and Implementation Support in Europe

6 neighbourhoods, one mission :

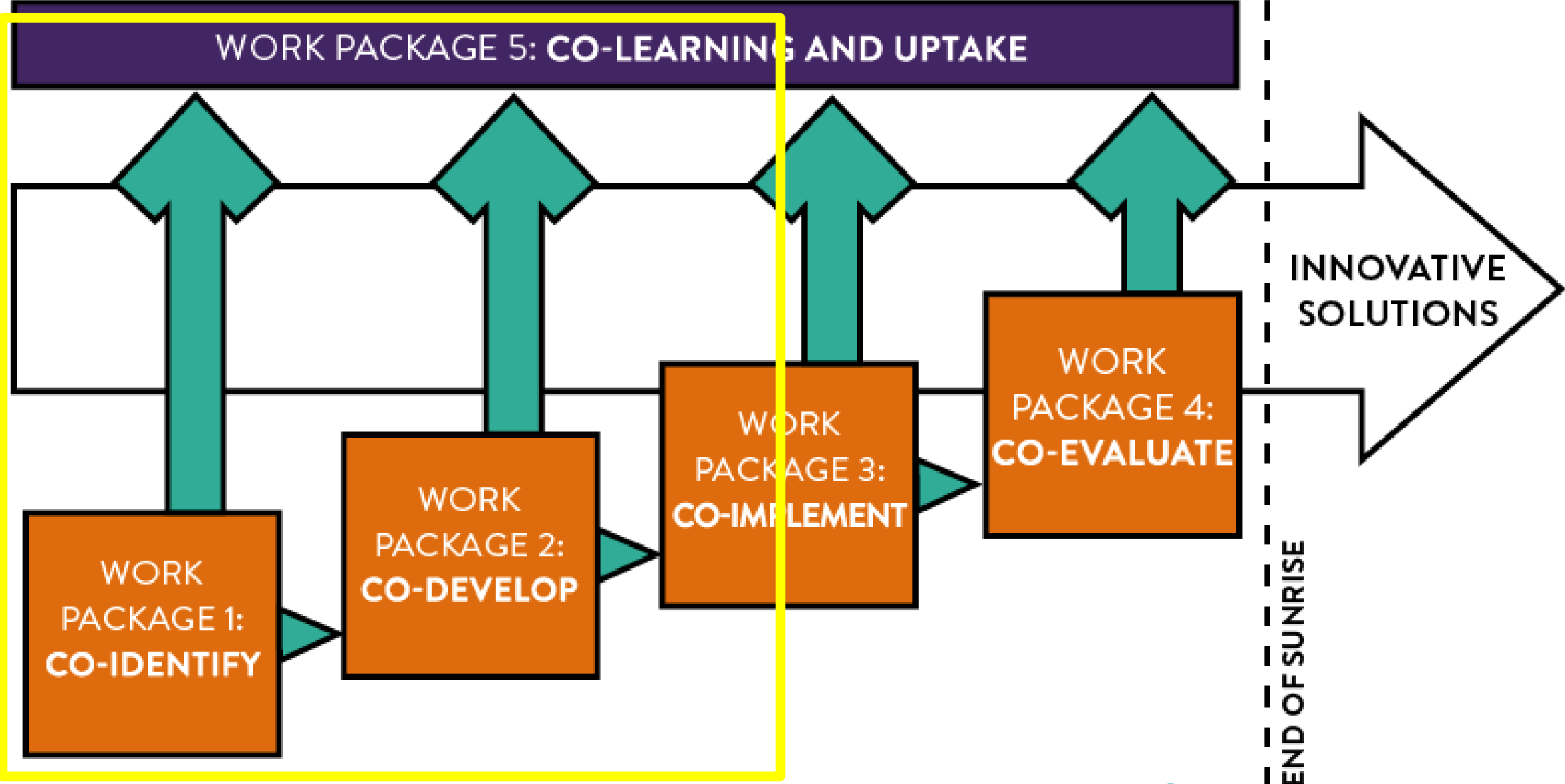
- address common mobility challenges at the urban district level
- implement innovative solutions for and with their residents, businesses etc.
- foster collaborative processes in specific neighbourhoods
- develop, implement, assess and facilitate co-learning about new, collaborative ways
- lay the foundation for a Sustainable Neighbourhood Mobility Planning concept

→ Co-Creation as the core methodology



SUNRISE - An Introduction

The Structure



SUNRISE project structure, by urbanista



SUNRISE - An Introduction

The Neighbourhoods

Bremen | Hulsberg (Germany)

Budapest | Törökör (Hungary)

Jerusalem | Baka (Israel)



Malmö | Lindängen (Sweden)

Southend-on-Sea | Centre (UK)

Thessaloniki | Neo Rysio (Greece)



Top from left: M. Glotz-Richter, Stadt Bremen; Stadt Budapest; Magister, Wikipedia; shorturl.at/chy1N.
Bottom from left: Årkan, Wikipedia; shorturl.at/jrxN3; Beata May, Wikipedia; shorturl.at/jmopi; TheTA.

Co-Creation in SUNRISE

Definition

Co-Creation:

“...the active flow of information and ideas among five sectors of society: government, academia, business, non-profits and citizens (the Quintuple Helix) which allows for participation, engagement, empowerment in, developing policy, creating programs, improving services, tackling systemic change with each dimension of society represented from the beginning. (Leading Cities 2014, 3)

“...an approach where heterogeneous actors collaborate to produce knowledge, instruments, technology, artefacts, policy, know-how, etc.” (JPI Urban Europe 2016, 52)

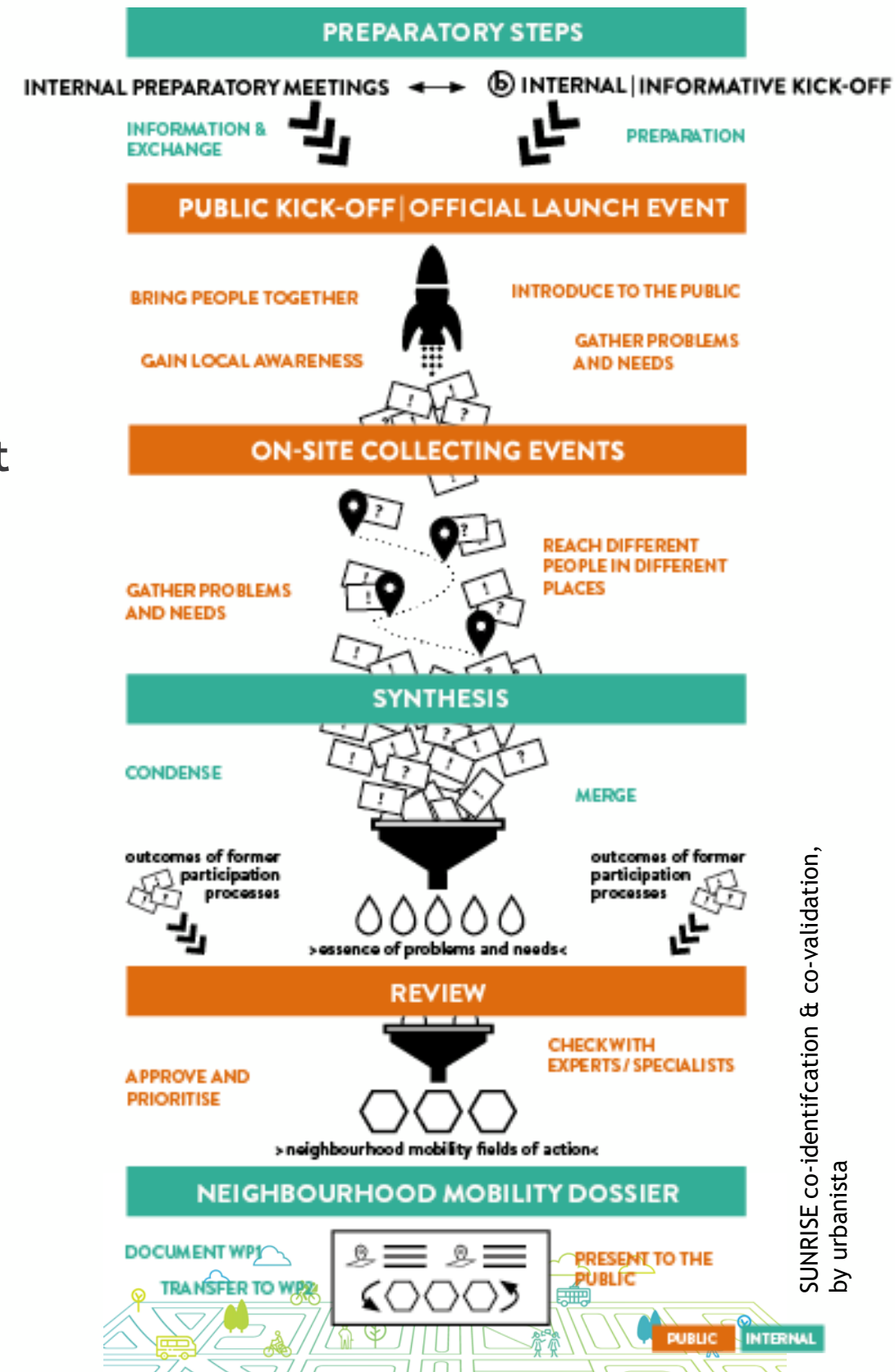
„the ensemble of mutually influential processes, in which actors from different sectors of society interact and collaborate for finding solutions to urban challenges.“ (Haufe & Franta 2019, 55)



Co-Creation in SUNRISE

Co-identification & Co-validation

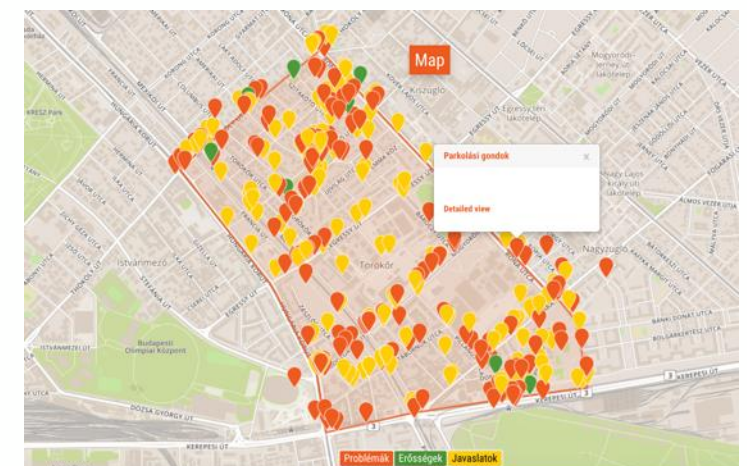
- Starting the co-creation process
- Internal preparatory meetings
- On-site collection of problems & needs (online & offline)
- SWOT analysis
- Merging of SWOT results and problems & needs
- Validate results in validation workshop
→ Neighbourhood Mobility Dossier
- Mostly information & consultation






Co-Creation in SUNRISE

Co-identification & Co-validation

- Co-creation activities
 - Internal & public kick-off
 - Information stands on festivals, in shopping streets, urban space
 - On-tour events to collect ideas
 - Questionnaires (offline & online) & interviews
 - Online mapping
 - Walking tours & field trips
 - Workshops (co-creation, collecting ideas & SWOT validation)
 - Meetings (e.g. core groups, focus groups, representatives, internal coordination)






 Workshop Thessaloniki, by TheTA (top)
 Online Mapping tool, by Urbanista (center)
 Mobile stand, by Southend Borough Council (bottom)

Co-Creation in SUNRISE

Co-development & Co-selection

Co-development builds on co-identification & co-validation process:

- Continuation of co-creation process
- Co-development of measure ideas
- Co-selection for measures to be implemented “Neighbourhood Mobility Action Plan”

- Information, consultation, co-decision

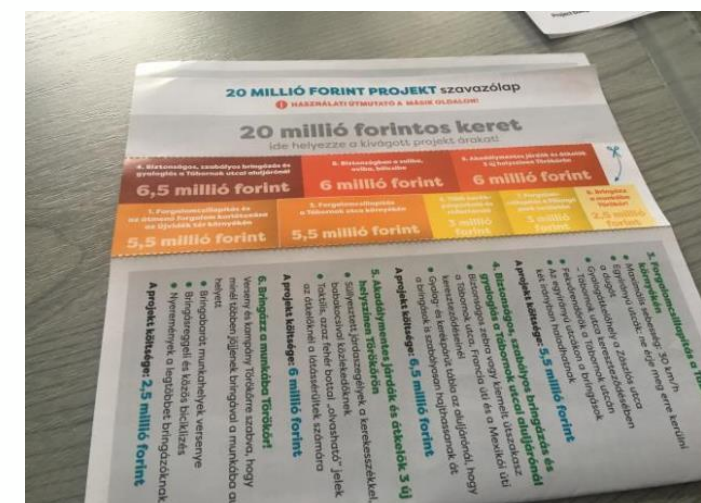


Co-creation meeting Budapest, by City of Mamlo (top),
TUW (bottom)

Co-Creation in SUNRISE

Co-development & Co-selection

- Co-creation activities
 - Local Workshops
 - Walking tours & field trips
 - Design & measures selection workshops
 - Online voting
 - Voting questionnaire
 - Awareness activities in the neighbourhood for the voting
 - Stand on neighbourhood festival to inform about measures
 - Pilot project
 - Meetings (e.g. core group, feasibility check, coordination with politicians administration and other stakeholders)



Co-Creation in SUNRISE

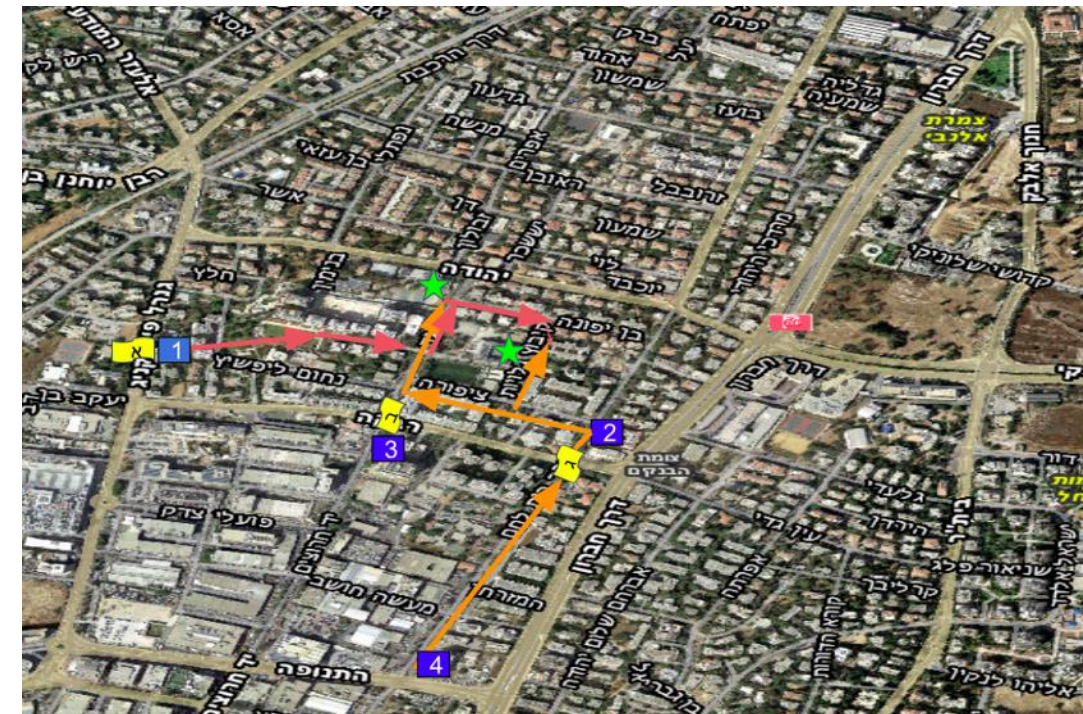
Results

Number of realised co-creation activities: 101
(11-24 per neighbourhood)

Average number of participants: 1100
(2200 informed)

33 measures have been co-developed and co-selected in the AN:

- Improvements for quality of stay in public space
- Improvements for bicycle & pedestrian traffic
- Restrictions for motorized private transport
- Improvements for public transport



Walking School Bus plan, Jerusalem (City of Jerusalem, top) , measure plan Southend (bottom right, by City Council Southend)

Co-Creation in SUNRISE

Lessons learnt (by urbanista & TUW)

- Methods & tools:
 - Use a mix of methods
 - Clear information material (online/offline) helps to keep people involved
- Participants:
 - Make sure a big variety of actors takes part in the co-creation process (variety over quantity)
 - Strategic, targeted activities for hard-to-reach-groups & special stakeholder
 - Regular checks for newly emerging actors / groups of actors not yet involved
- Motivation:
 - Keep content of activities specific so participants feel affected and motivated
 - Highlight that co-creation will lead to tangible change and explain formal procedures for implementation (participation promise)
 - Make co-creation fun and exciting for participants
 - Value the participants' efforts



Co-Creation in SUNRISE

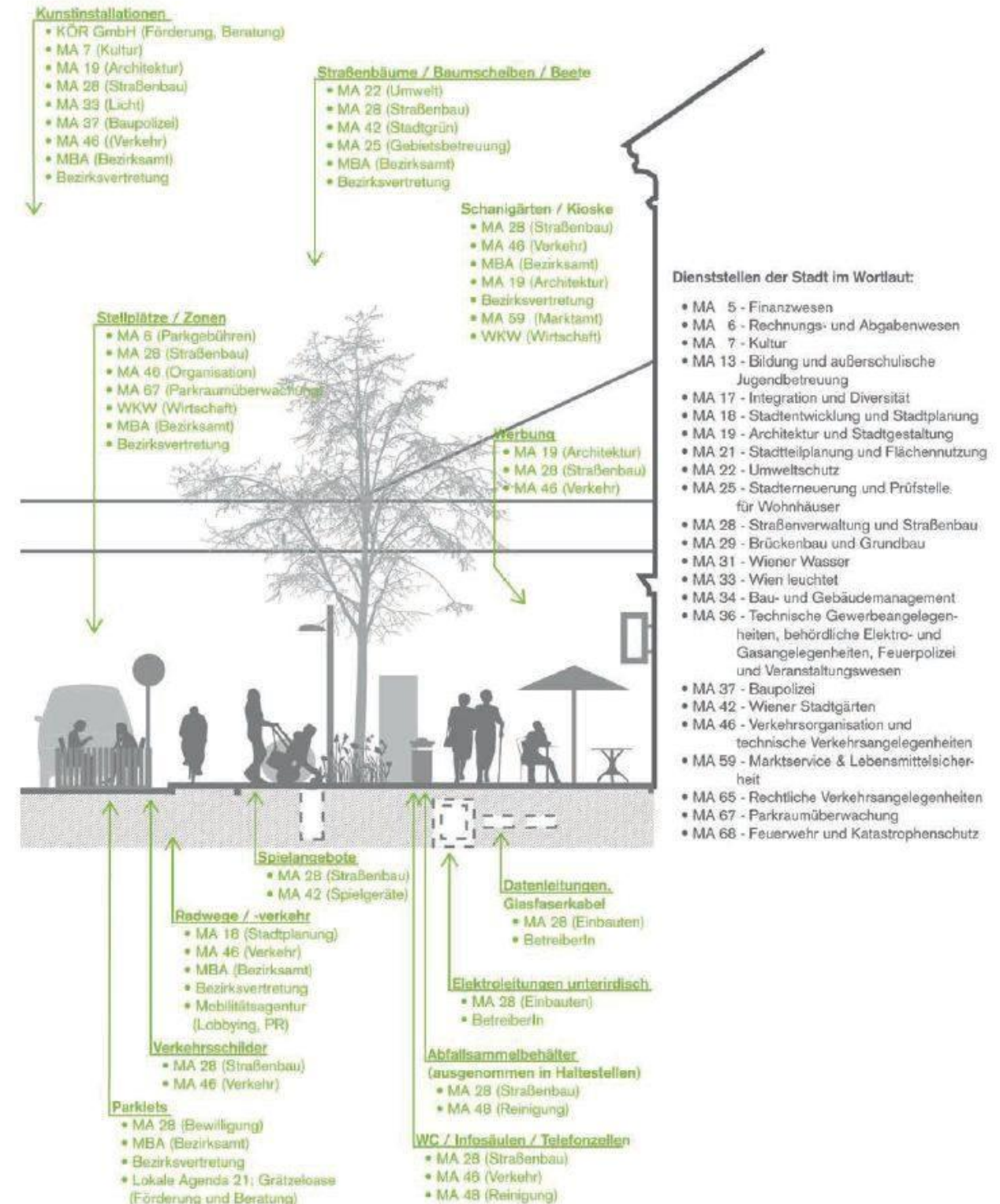
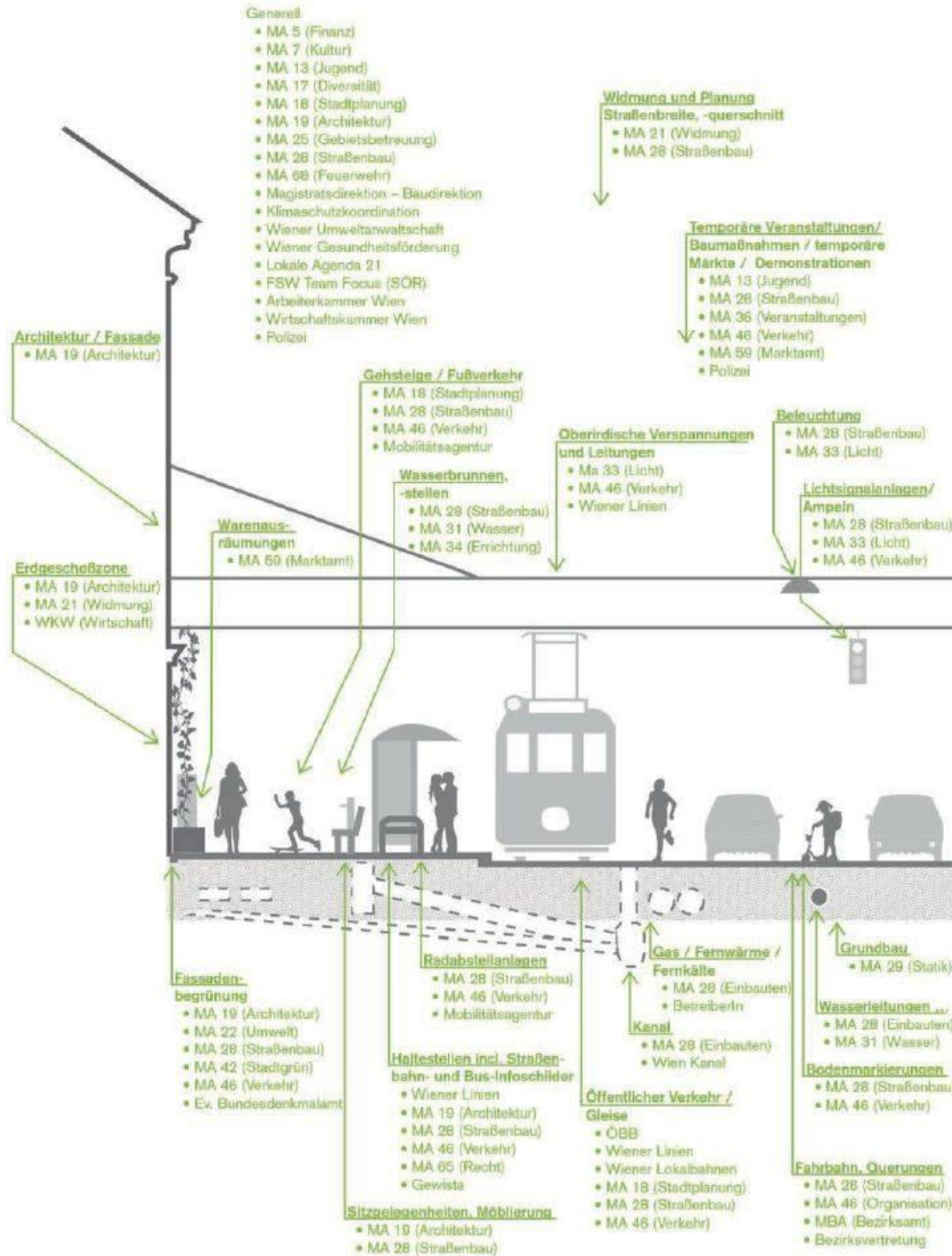
Lessons learnt (by urbanista & TUW)

- Organisation:
 - Develop a precise co-creation process plan
 - Use existing local networks; partner with established local initiatives
 - Locations for activities should be easy to access
- Expectations:
 - Make constraints/restrictions/scope of co-creation clear
 - Fully accessible documentation & feedback for maximum transparency
 - Ensure ideas brought forward are in line with city policies & plans
- Politics & administration:
 - Keep election cycles in mind
 - Ensure support by the municipality, local council for the co-creation process as early as possible
 - Include city administration experts in the co-creation activities



Co-creation in action, by Nadine Haufe, TUW (top) & City of Malmo (bottom)

City departments are hard-to-reach groups, too!



Contact

Thank you!



Technische Universität Wien
Institute of Spatial Planning

raum sociology

urbanista

Mail: lukas.franta@tuwien.ac.at
nadine.haufe@tuwien.ac.at
grossmann@urbanista.de

Web: soziologie.tuwien.ac.at
urbanista.de



Partners



Die Senatorin für Klimaschutz,
Umwelt, Mobilität, Stadtentwicklung
und Wohnungsbau

