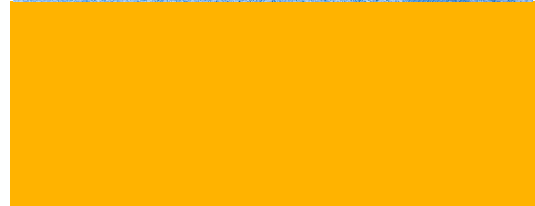


# THE ROLE OF CITIES AS TEN-T URBAN NODES & THEIR DECARBONISATION AMBITIONS

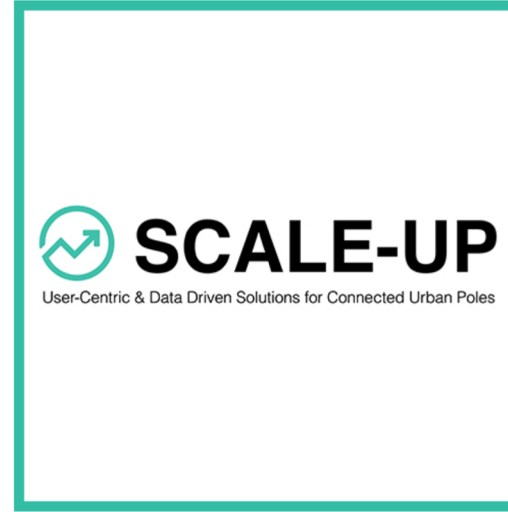
Lucian Zagan



# MOVE 21 & SCALE-UP



Oslo, Gothenburg, Hamburg  
Munich, Bologna, Rome



Antwerp, Madrid, Turku

Urban Nodes Forum

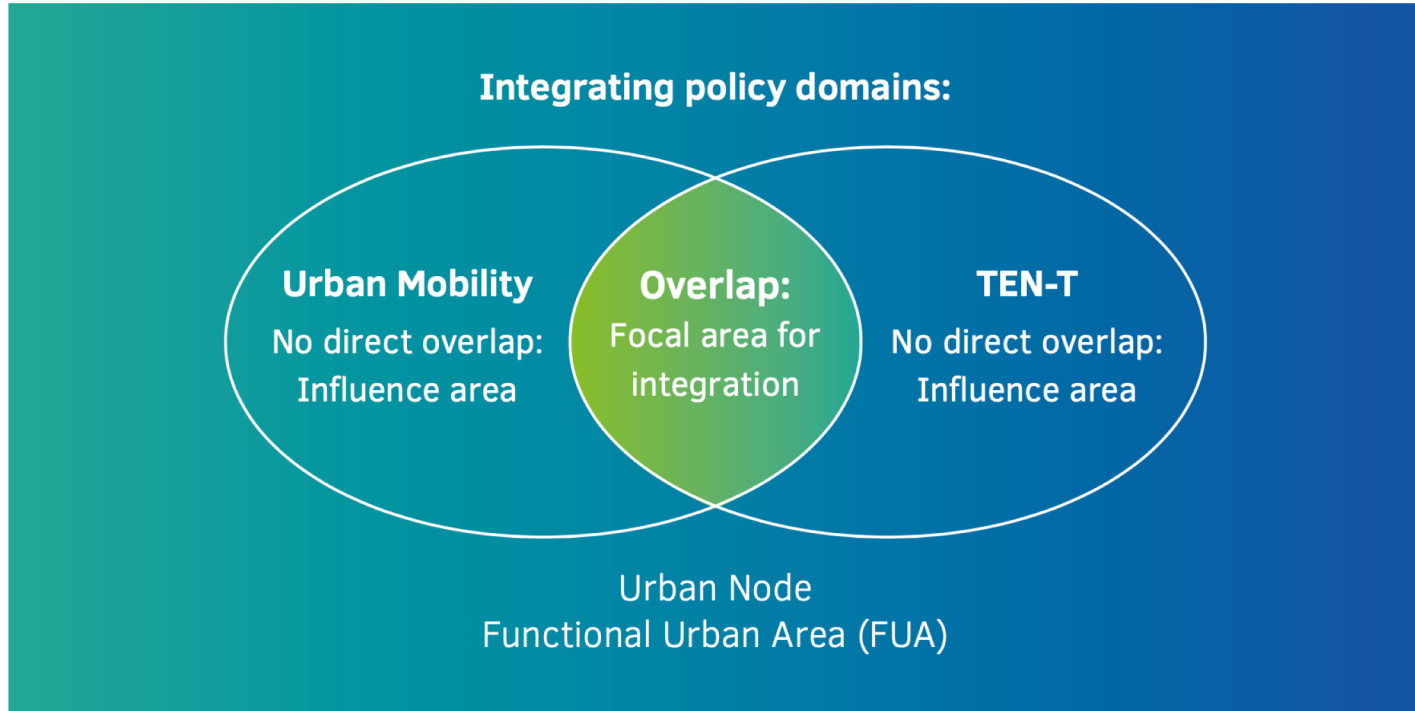
# What are urban nodes?

“Urban node” means an urban area where the transport infrastructure of the trans-European transport network, such as ports including passenger terminals, airports, railway stations, logistic platforms and freight terminals located in and around an urban area, is connected with other parts of that infrastructure and with the infrastructure for regional and local traffic.

- Urban nodes are the starting point or the final destination (“last mile”) for passengers and freight moving on the trans-European transport network.
- They are points of transfer within or between different transport modes.



# Policy coherence



Source: Vital Nodes

# Policy coherence

- ✓ Different **planning paradigms**.
- ✓ TEN-T Policy ensures **improved European interconnections** for passenger and goods.
- ✓ However, at the urban nodes of the network, there are **negative consequences of traffic**: congestion, poor air quality, noise, road safety risks, attractiveness and livability.
- ✓ Cities and regions need to **develop sustainable transport systems**, mitigating the negative consequences of traffic.

# Multimodal hubs

The various types of multimodal hubs ensure interconnection and integration across the transport system, both for passenger transport as for freight:

- ✓ Spatial integration and connectivity
- ✓ Intermodal infrastructures
- ✓ Network optimisations
- ✓ Park & ride facilities
- ✓ User-friendly transfer
- ✓ Flexible shared services
- ✓ Additional services (e.g. e-charging, last-mile delivery).

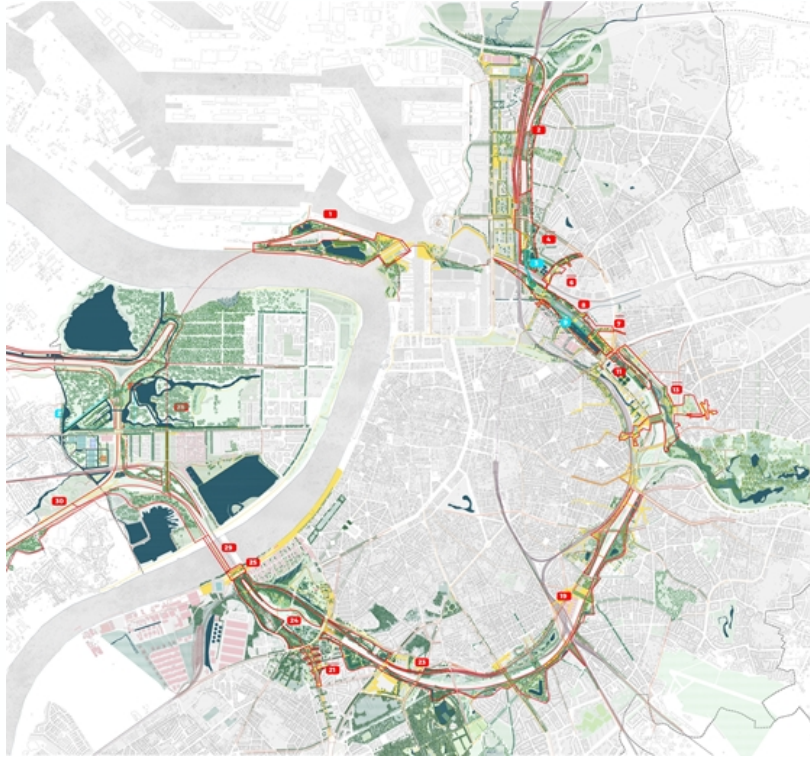


# The role of cities as urban nodes

Challenging issues in the field of freight and logistics, passenger flows, sustainability, liveability, and especially integration of urban nodes in the TEN-T network require an integrated policy answer which often goes beyond the city level.

- ✓ Mitigating the negative consequence of traffic
- ✓ Integrating the large infrastructures into the city fabric
- ✓ Establishing an effective cooperation structure at the functional urban area
- ✓ Planning and investing in multimodal hubs to ensure connectivity beyond the city area (functional urban area, regional, TEN-T).

# An example



Completing the ring  
road in Antwerp



# An example

Completing the ring road in Antwerp



# An example

Completing the ring road in Antwerp



*Source: City of Antwerp*



# Thank you for your attention!

Contact: [lucian.zagan@eurocities.eu](mailto:lucian.zagan@eurocities.eu)

