




WATERBORNE

5th MORE TEN-T Network Workshop



Maria Boile, Coordinator, Waterborne TP

13 December 2021



Modal shift in national/international journeys from road to rail and waterborne, for passenger transport. How can this contribute to meeting modal shift targets within cities/urban nodes? And how the European road network can adapt and redefine its long-term role following such a modal shift?



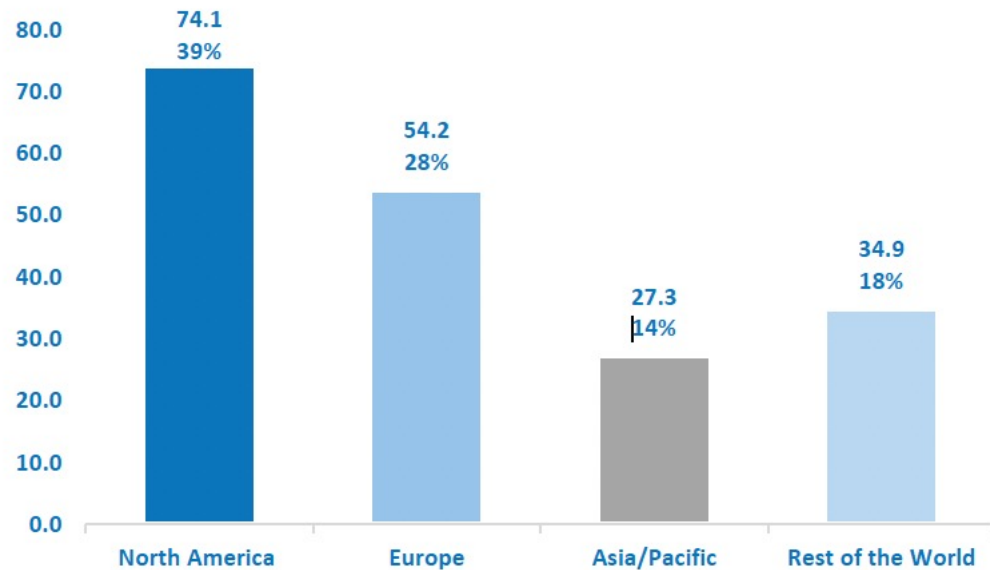
Content

Content

- Waterborne – national and international journeys
- SRIA – Ports & Logistics
- Smart Growth – For Coastal and Waterfront Communities
- Closing remarks



Cruise Industry



Source: CLIA

Global distribution of bed capacity for 2019.

Europe accounts for 28% of the capacity, or 54.2 million bed days

61% or 33 million bed days - Mediterranean share

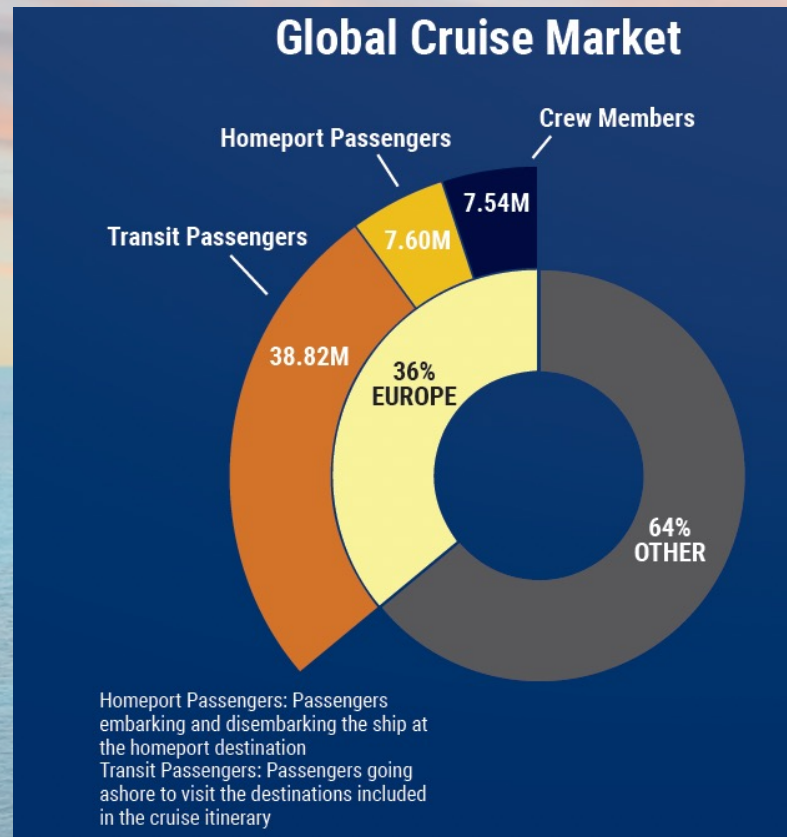
39% - Northern European share

(Barcelona, Civitavecchia, Palma Mallorca, Venice, Piraeus, Genoa, Savona, Marseille, Tenerife, Naples, Valletta, Dubrovnik, Southampton, Copenhagen, Hamburg, Kiel, Amsterdam, Stockholm, Lisbon, Tallin, Helsinki, etc.)



Cruise Industry

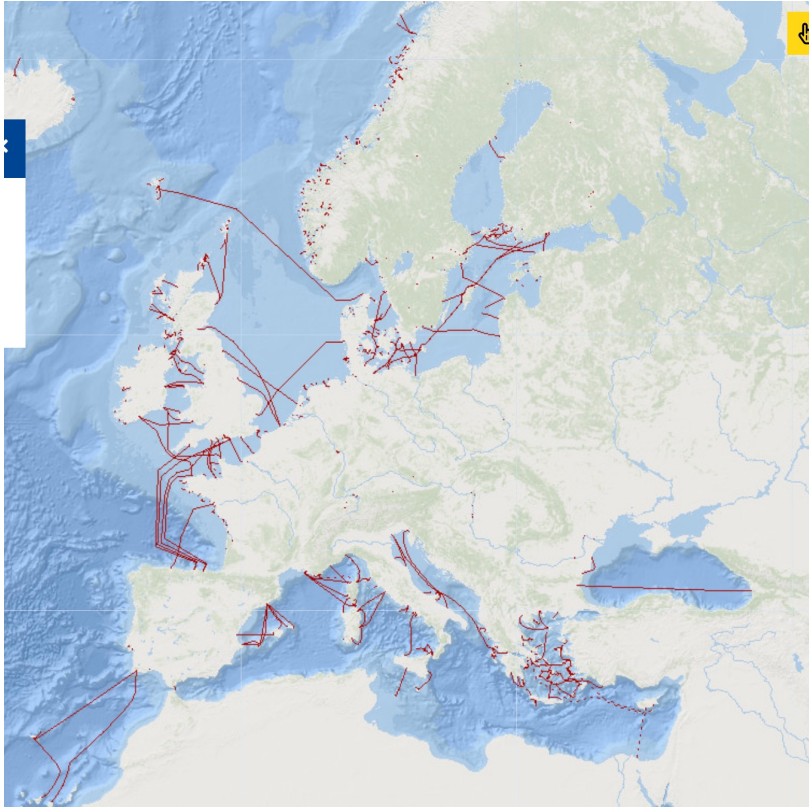
148 million passenger and crew on shore visits



Source: A Cruise Europe Fact Sheet
(European Cruise Industry
Economic Impact) CLIA 2019



Ferry Lines (2019)



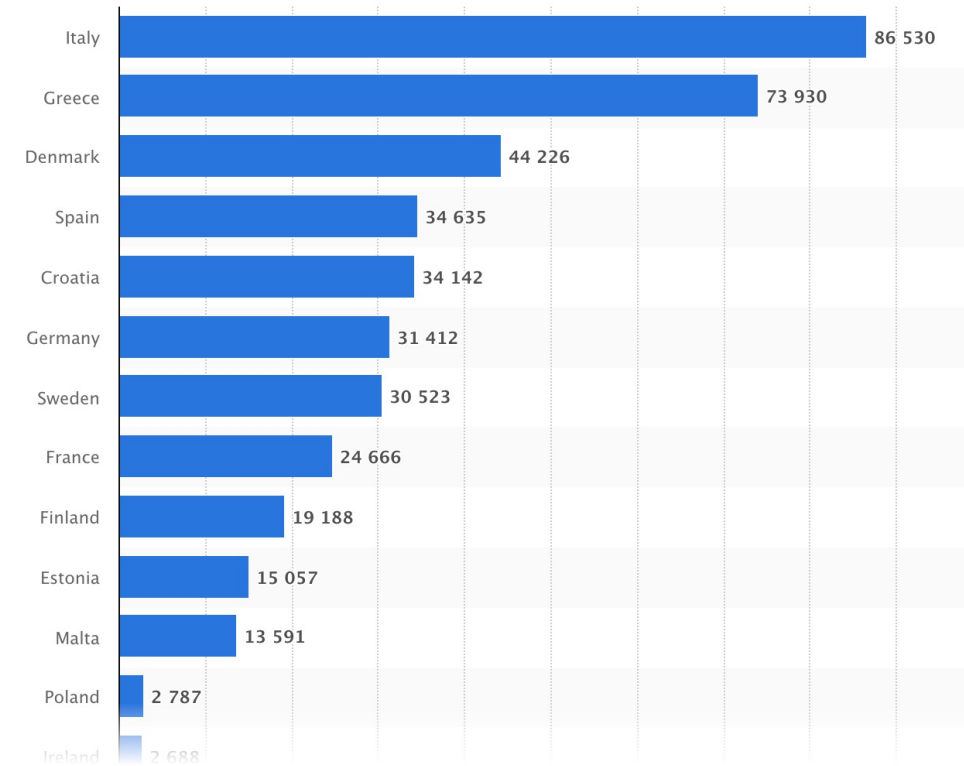
Source: <https://emodnet.ec.europa.eu/en/>

Almost 419 million passengers passed through EU ports

~87 million embarked and disembarked in Italian ports

~74 million people embarked and disembarked in Greek ports

Cruise and Ferry



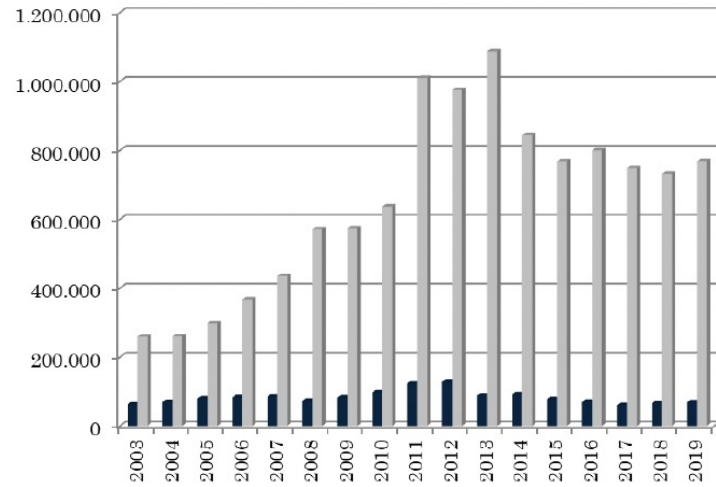
<https://www.statista.com/statistics/>

Number of passengers by country (in 1000s)

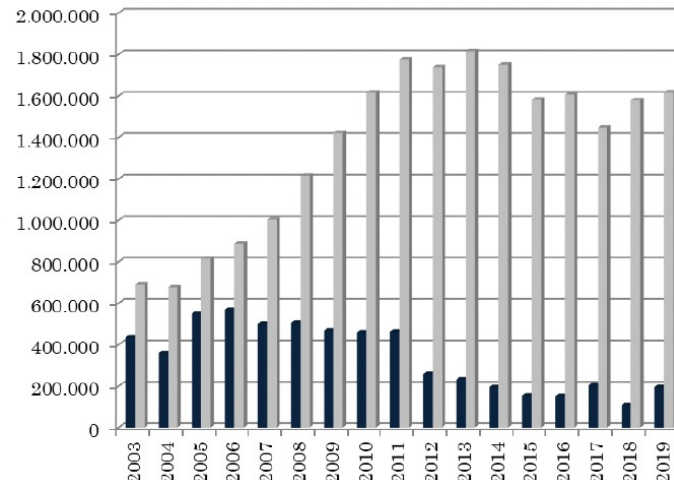


ADRION Region

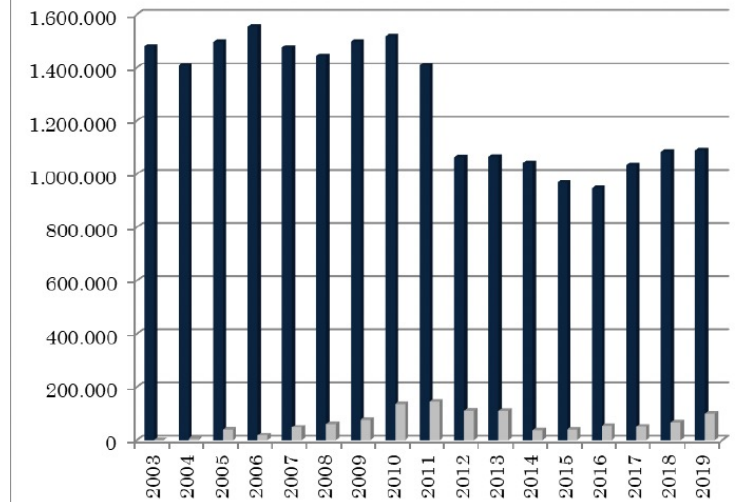
Cruise and Ferry



DUBROVNIK



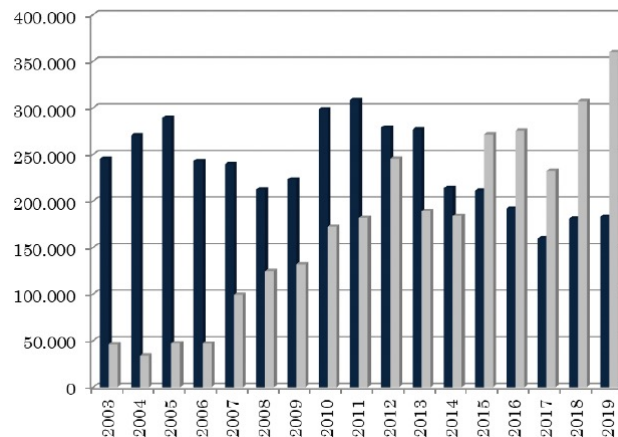
VENICE



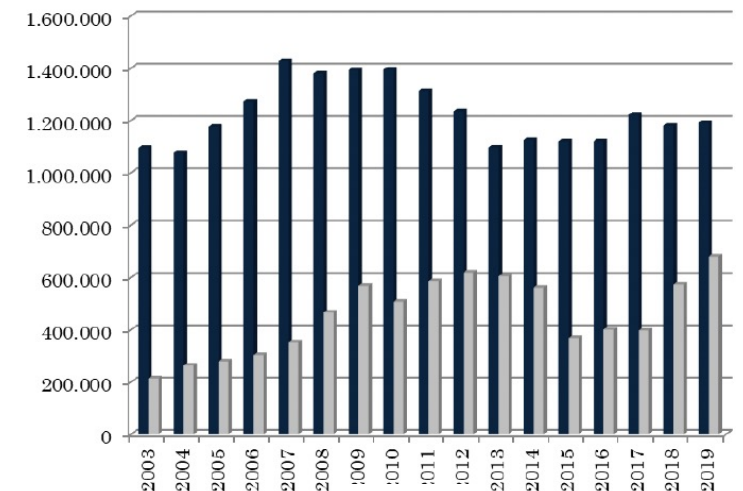
ANCONA

■ FERRY
■ CRUISE

Source: Mosconi A. (2019)



SPLIT



BARI



Measures

- Seamless transport
- Enhanced connectivity - efficient connections with large capacity modes
- Improved connection with local modes on the waterborne side (co-located)
- Coordinated schedules - reduced delays in ports
- Improved service frequency
- Increased level of service
- Dynamic traffic management
- Traffic channelization – through/fast lanes for high capacity modes or vehicles
- Shared space





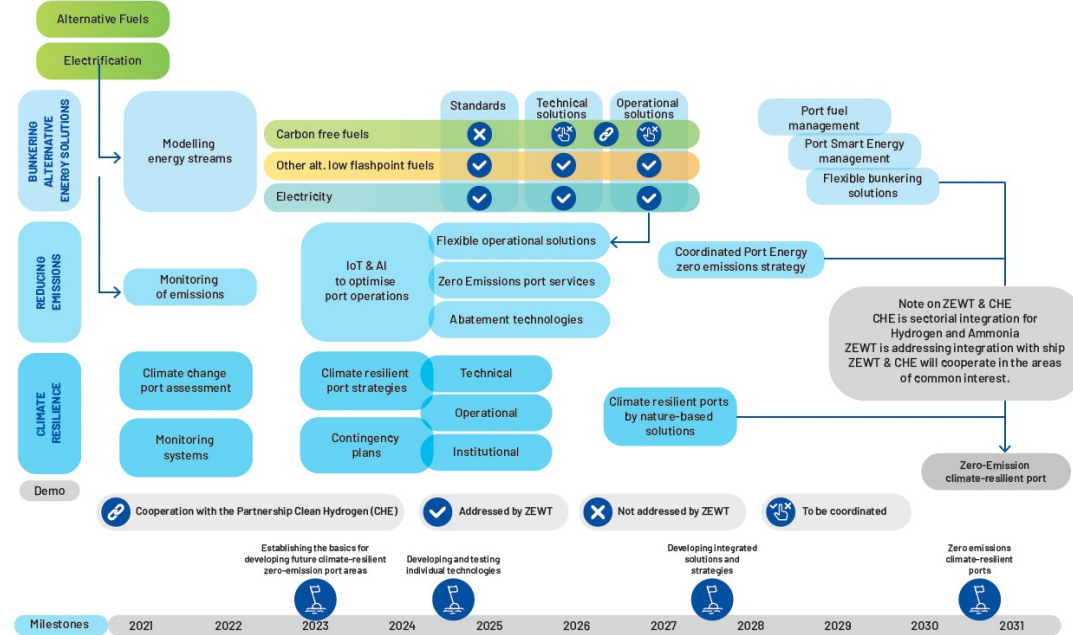
WATERBORNE TECHNOLOGY PLATFORM

STRATEGIC RESEARCH
AND INNOVATION AGENDA
FOR THE EUROPEAN
WATERBORNE SECTOR
Ports & Logistics



June 2021

TOWARDS ZERO EMISSIONS PORTS



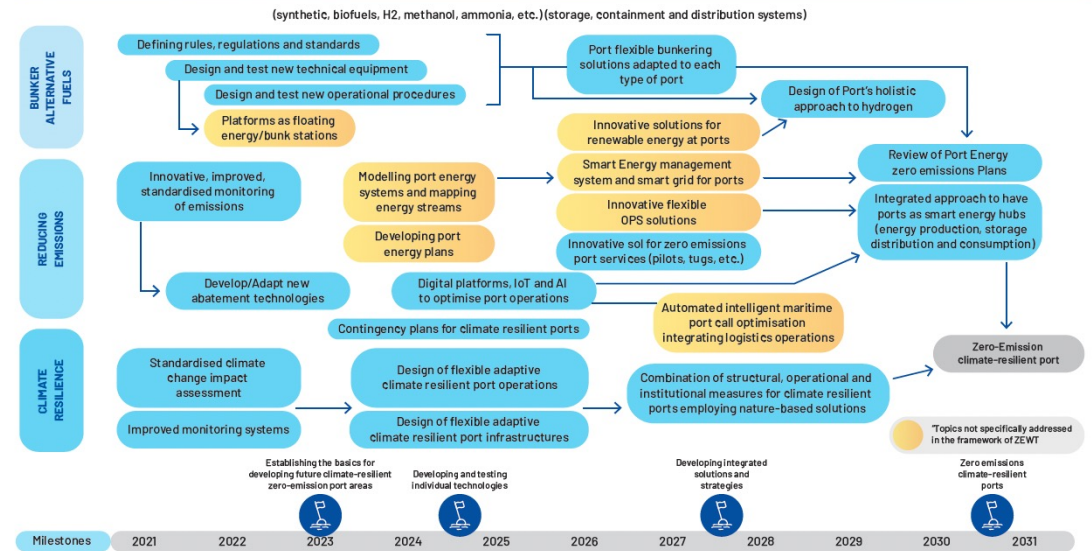
Essential innovation in planning, design, construction, operation and management of waterborne infrastructures

Optimise monitoring systems (contingency plans, design flexible and adaptive infrastructures and operations)

Innovative aspects

- Bunkering alternative energy solutions
- Reducing emissions
- Climate resiliency

PORTS - ENSURING SEAMLESS INTEGRATION OF SHIPPING AND THE DEVELOPMENT OF ZERO EMISSIONS PORT AREAS



Maritime transport of both passengers and freight is expected to grow significantly in the coming decades, increasing pressure on port areas.

Increasing demands in terms of costs, duration, visibility and reliability of transport

Pressure from society to make the waterborne transport chain more environmentally friendly, as well as even more safe and secure

Integration of maritime, port and hinterland operations

Innovative aspects

- Digitalisation
- Automation
- Cooperation

Smart Growth - Elements

- Mix land uses
- Take advantage of compact design
- Provide a range of housing choices
- **Create walkable communities**
- Foster distinctive, attractive communities
- Preserve open space & critical environmental areas
- Direct development toward existing communities
- **Provide a variety of transportation options**
- Make development decisions predictable & fair
- Encourage community & stakeholder collaboration

Source: <https://coastalsmartgrowth.noaa.gov/>



Destination – specific conditions (multimodal options that rival car ownership, new street designs, transit priority and transit first, accessibility, etc)

Agreement with local communities on how to manage waterborne traffic volumes

Cooperation and investment in greener, more sustainable practices





WATERBORNE

Thank you!

maria.boile@waterborne.eu

